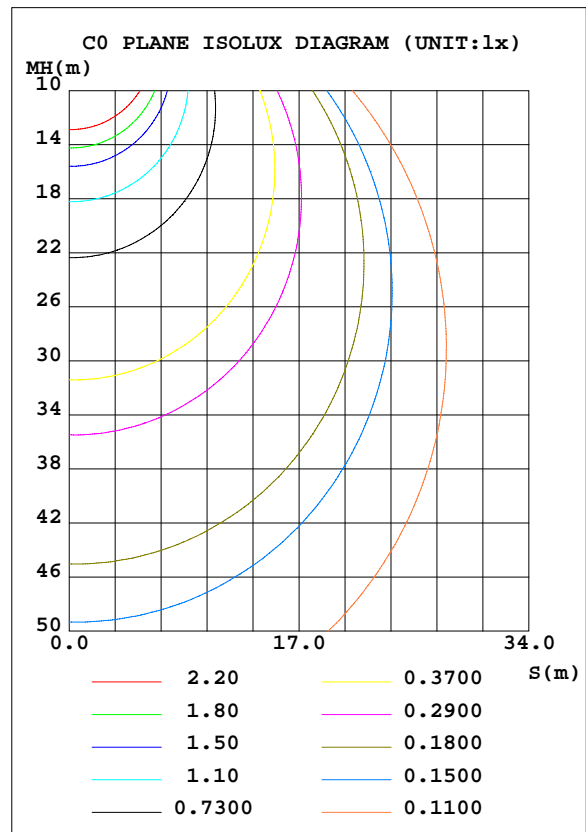
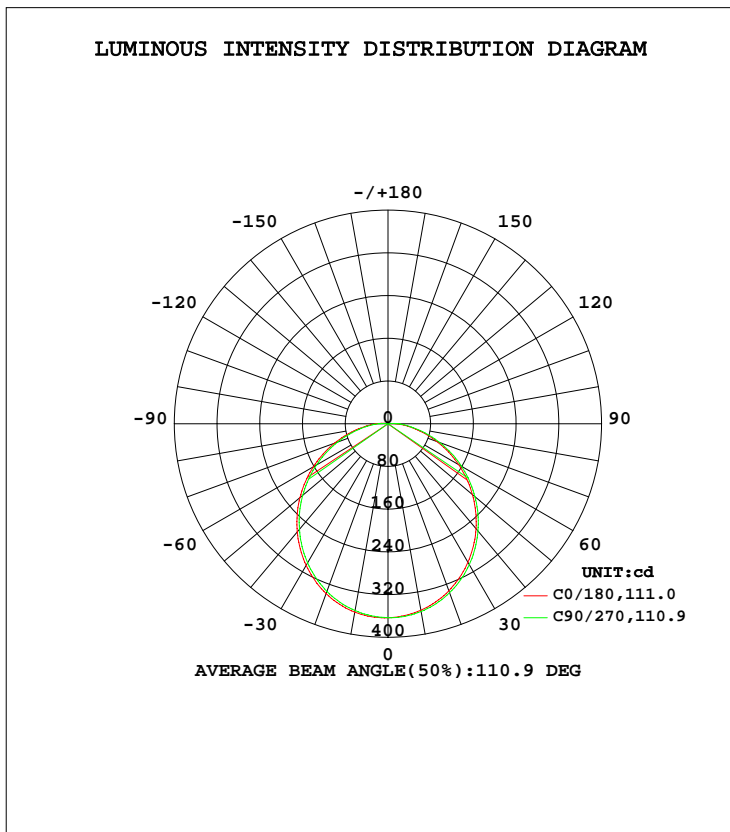


**LUMINAIRE PHOTOMETRIC TEST REPORT**

Test:U:120.1V I:0.1210A P:14.41W PF:0.9920 Lamp Flux:1065.2x1 lm		
NAME: CL70-LED	TYPE:N/A	WEIGHT:N/A
SPEC.:N/A	DIM.: N/A	SERIAL No.:N/A
MFR.: NDR	SUR.:N/A	Shielding Angle:N/A

DATA OF LAMP		PHOTOMETRIC DATA			
MODEL	RSZ160718506-10	Imax(cd)	363.6	S/MH(C0/180)	1.23
NOMINAL POWER(W)	14	LOR(%)	100.0	S/MH(C90/270)	1.25
RATED VOLTAGE(V)	120	TOTAL FLUX(lm)	1065.2	$\eta$ UP, DN(C0-180)	0.8,49.1
NOMINAL FLUX(lm)	1065.2	CIE CLASS	DIRECT	$\eta$ UP, DN(C180-360)	0.7,49.4
LAMPS INSIDE	1	$\eta$ up(%)	1.5	CIBSE SHR NOM	1.25
TEST VOLTAGE(V)	120	$\eta$ down(%)	98.5	CIBSE SHR MAX	1.35



C Range: 0 - 360DEG  
 C Interval: 22.5DEG  
 Test Speed: 10.0deg/s  
 Temperature:25.3DEG  
 Operators:ben  
 Test Date:2016-07-21

$\gamma$  Range: 0 - 180DEG  
 $\gamma$  Interval: 1.0DEG  
 Test System:EVERFINE GO-R5000\_V2 SYSTEM V2.0.351  
 Humidity:47%  
 Test Distance:2.437m [K=1.0000]  
 Remarks:

**ZONAL FLUX DIAGRAM**
**ZONAL FLUX DIAGRAM:**

$\gamma$	C0	C45	C90	C135	C180	C225	C270	C315	$\gamma$	$\Phi$ zone	$\Phi$ total	%lum, lamp
10	358.4	357.0	355.1	354.3	354.7	355.6	357.0	358.5	0- 10	34.34	34.34	3.22,3.22
20	338.9	336.7	334.2	332.2	333.0	334.5	337.0	339.2	10- 20	98.07	132.4	12.4,12.4
30	306.3	304.3	300.9	298.5	299.6	301.3	304.6	307.1	20- 30	147.7	280.1	26.3,26.3
40	264.4	262.1	258.1	255.1	256.5	258.5	262.2	265.4	30- 40	176.8	456.9	42.9,42.9
50	215.3	212.9	208.5	205.2	206.5	208.7	212.7	216.2	40- 50	182.2	639.1	60,60
60	161.5	159.2	154.9	151.4	152.7	154.8	158.7	162.5	50- 60	164.6	803.7	75.5,75.5
70	106.8	104.4	100.4	97.14	97.49	99.22	103.1	106.9	60- 70	128.1	931.8	87.5,87.5
80	56.30	54.36	51.68	48.47	48.41	49.31	52.57	56.31	70- 80	80.38	1012	95,95
90	22.07	20.31	17.52	15.45	15.73	16.34	18.73	21.74	80- 90	36.73	1049	98.5,98.5
100	2.542	1.554	1.359	1.041	0.9864	0.3641	0.4701	1.608	90-100	9.906	1059	99.4,99.4
110	0.3635	0.4229	0.4477	0.4987	0.4339	0.3217	0.3495	0.3098	100-110	0.3528	1059	99.4,99.4
120	0.7860	0.7712	0.8513	0.8291	0.8607	0.8881	0.8678	0.5950	110-120	0.5759	1060	99.5,99.5
130	1.527	1.252	1.432	1.382	1.231	1.273	1.214	1.107	120-130	0.9406	1061	99.6,99.6
140	2.013	1.847	2.006	2.154	1.844	2.029	1.560	1.600	130-140	1.236	1062	99.7,99.7
150	2.677	2.310	2.506	2.684	2.597	2.237	2.174	1.289	140-150	1.297	1063	99.8,99.8
160	2.615	2.604	2.734	2.791	2.764	2.802	2.132	1.790	150-160	1.112	1064	99.9,99.9
170	2.877	2.155	2.250	2.735	2.453	2.045	2.029	0.9352	160-170	0.6831	1065	100,100
180	0.3930	0.4132	0.3057	0.2926	0.4231	0.4229	0.4220	0.4218	170-180	0.1753	1065	100,100
DEG	LUMINOUS INTENSITY:cd Less than 25% Percent = 9.8 %									UNIT:lm		

Conical surface Flux(90deg): 548.81 lm

%lum = 51.5%

%lamp = 51.5%

Conical surface Flux(120deg): 803.74 lm

%lum = 75.5%

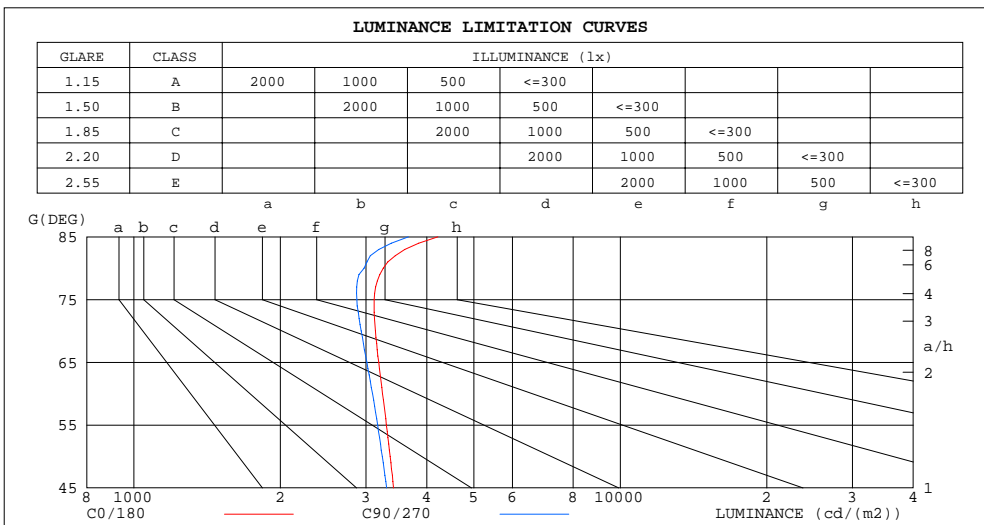
%lamp = 75.5%

 C Range: 0 - 360DEG  
 C Interval: 22.5DEG  
 Test Speed: 10.0deg/s  
 Temperature:25.3DEG  
 Operators:ben  
 Test Date:2016-07-21

 $\gamma$  Range: 0 - 180DEG  
 $\gamma$  Interval: 1.0DEG  
 Test System:EVERFINE GO-R5000\_V2 SYSTEM V2.0.351  
 Humidity:47%  
 Test Distance:2.437m [K=1.0000]  
 Remarks:

**LUMINANCE LIMITATION CURVES**

Test:U:120.1V I:0.1210A P:14.41W PF:0.9920 Lamp Flux:1065.2x1 lm		
NAME: CL70-LED	TYPE:N/A	WEIGHT:N/A
SPEC.:N/A	DIM.: N/A	SERIAL No.:N/A
MFR.: NDR	SUR.:N/A	Shielding Angle:N/A



LUMINANCE cd/(m2)		
G( DEG)	C0/180	C90/270
85	4215	3669
80	3257	2973
75	3119	2873
70	3137	2932
65	3188	3015
60	3245	3094
55	3304	3170
50	3365	3241
45	3419	3309

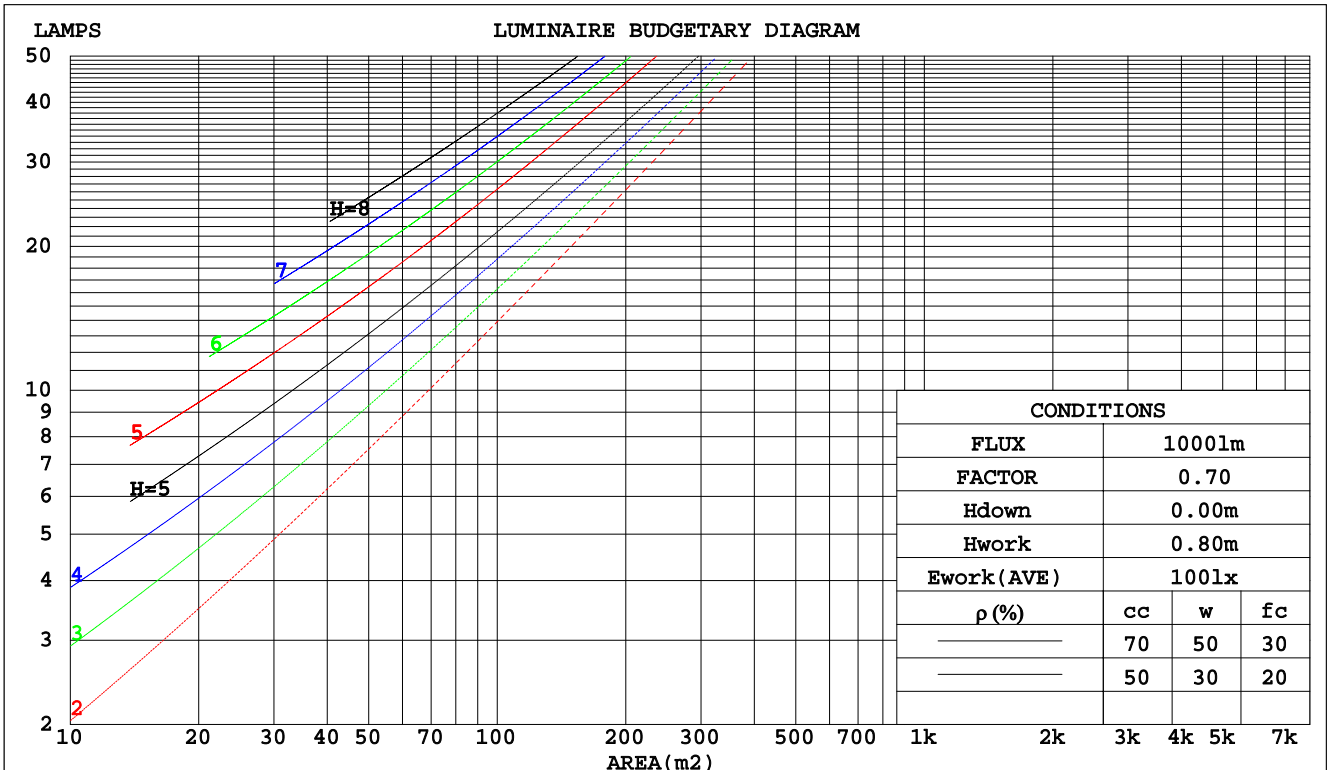
C Range: 0 - 360DEG  
 C Interval: 22.5DEG  
 Test Speed: 10.0deg/s  
 Temperature: 25.3DEG  
 Operators: ben  
 Test Date: 2016-07-21

$\gamma$  Range: 0 - 180DEG  
 $\gamma$  Interval: 1.0DEG  
 Test System: EVERFINE GO-R5000\_V2 SYSTEM V2.0.351  
 Humidity: 47%  
 Test Distance: 2.437m [K=1.0000]  
 Remarks:

CU AND LUMINAIRE BUDGETARY ESTIMATE DIAGRAM

Test:U:120.1V I:0.1210A P:14.41W PF:0.9920 Lamp Flux:1065.2x1 lm		
NAME: CL70-LED	TYPE:N/A	WEIGHT:N/A
SPEC.:N/A	DIM.: N/A	SERIAL No.:N/A
MFR.: NDR	SUR.:N/A	Shielding Angle:N/A

pcc	80%			70%			50%			30%			10%			0
pw	50%	30%	10%	50%	30%	10%	50%	30%	10%	50%	30%	10%	50%	30%	10%	0
pfc	20%			20%			20%			20%			20%			0
RCR	RCR:Room Cavity Ratio															
	Coefficients of Utilization(CU)															
0.0	1.19	1.19	1.19	1.16	1.16	1.16	1.10	1.10	1.10	1.05	1.05	1.05	1.01	1.01	1.01	.98
1.0	1.03	.98	.94	1.00	.96	.92	.96	.92	.89	.91	.89	.86	.87	.85	.83	.81
2.0	.89	.82	.76	.87	.81	.75	.83	.78	.73	.80	.75	.71	.76	.73	.69	.67
3.0	.78	.70	.63	.76	.69	.62	.73	.66	.61	.70	.64	.60	.67	.63	.58	.56
4.0	.69	.60	.53	.68	.59	.53	.65	.58	.52	.62	.56	.51	.60	.55	.50	.48
5.0	.62	.53	.46	.60	.52	.45	.58	.51	.45	.56	.49	.44	.54	.48	.44	.41
6.0	.56	.46	.40	.54	.46	.40	.53	.45	.39	.51	.44	.39	.49	.43	.38	.36
7.0	.50	.41	.35	.49	.41	.35	.48	.40	.35	.46	.39	.34	.45	.39	.34	.32
8.0	.46	.37	.31	.45	.37	.31	.44	.36	.31	.42	.36	.31	.41	.35	.30	.28
9.0	.42	.34	.28	.41	.34	.28	.40	.33	.28	.39	.32	.28	.38	.32	.27	.26
10.0	.39	.31	.26	.38	.31	.26	.37	.30	.25	.36	.30	.25	.35	.29	.25	.23



C Range: 0 - 360DEG  
 C Interval: 22.5DEG  
 Test Speed: 10.0deg/s  
 Temperature:25.3DEG  
 Operators:ben  
 Test Date:2016-07-21

γ Range: 0 - 180DEG  
 γ Interval: 1.0DEG  
 Test System:EVERFINE GO-R5000\_V2 SYSTEM V2.0.351  
 Humidity:47%  
 Test Distance:2.437m [K=1.0000]  
 Remarks:

**WEC AND CCEC**

Test:U:120.1V I:0.1210A P:14.41W PF:0.9920 Lamp Flux:1065.2x1 lm		
NAME: CL70-LED	TYPE:N/A	WEIGHT:N/A
SPEC.:N/A	DIM.: N/A	SERIAL No.:N/A
MFR.: NDR	SUR.:N/A	Shielding Angle:N/A

$\rho_{cc}$	80%			70%			50%			30%			10%			0
$\rho_w$	50%	30%	10%	50%	30%	10%	50%	30%	10%	50%	30%	10%	50%	30%	10%	0
$\rho_{fc}$	20%			20%			20%			20%			20%			0
RCR	RCR:Room Cavity Ratio						Wall Exitance Coefficients(WEC)									
0.0																
1.0	.328	.187	.059	.321	.183	.058	.306	.176	.056	.293	.169	.054	.281	.163	.053	
2.0	.301	.165	.051	.295	.162	.050	.282	.157	.049	.270	.152	.047	.260	.147	.046	
3.0	.276	.147	.044	.270	.145	.044	.259	.140	.043	.248	.136	.042	.239	.132	.041	
4.0	.253	.131	.039	.248	.130	.038	.238	.126	.038	.229	.123	.037	.220	.120	.036	
5.0	.233	.119	.034	.228	.117	.034	.219	.114	.034	.211	.111	.033	.203	.109	.033	
6.0	.215	.108	.031	.211	.107	.031	.203	.104	.030	.196	.102	.030	.189	.100	.030	
7.0	.200	.099	.028	.196	.098	.028	.189	.096	.028	.183	.094	.027	.176	.092	.027	
8.0	.187	.091	.026	.183	.090	.026	.177	.088	.025	.171	.087	.025	.165	.085	.025	
9.0	.175	.085	.024	.172	.084	.023	.166	.082	.023	.161	.080	.023	.155	.079	.023	
10.0	.164	.079	.022	.161	.078	.022	.156	.077	.022	.151	.075	.021	.147	.074	.021	

$\rho_{cc}$	80%			70%			50%			30%			10%			0
$\rho_w$	50%	30%	10%	50%	30%	10%	50%	30%	10%	50%	30%	10%	50%	30%	10%	0
$\rho_{fc}$	20%			20%			20%			20%			20%			0
RCR	RCR:Room Cavity Ratio						Ceiling Cavity Exitance Coefficients(CCEC)									
0.0	.202	.202	.202	.173	.173	.173	.118	.118	.118	.068	.068	.068	.022	.022	.022	
1.0	.193	.168	.145	.165	.144	.124	.113	.099	.086	.065	.057	.050	.021	.018	.016	
2.0	.185	.144	.109	.159	.124	.094	.109	.086	.066	.063	.050	.038	.020	.016	.013	
3.0	.177	.126	.085	.152	.109	.074	.104	.076	.052	.060	.044	.031	.019	.014	.010	
4.0	.170	.113	.070	.146	.098	.061	.100	.068	.043	.058	.040	.025	.019	.013	.008	
5.0	.162	.103	.059	.139	.089	.051	.096	.062	.036	.056	.036	.021	.018	.012	.007	
6.0	.155	.094	.051	.133	.082	.044	.092	.057	.031	.053	.034	.019	.017	.011	.006	
7.0	.148	.087	.045	.127	.076	.039	.088	.053	.028	.051	.031	.017	.017	.010	.005	
8.0	.141	.082	.041	.122	.071	.035	.084	.050	.025	.049	.029	.015	.016	.010	.005	
9.0	.135	.077	.037	.117	.067	.032	.081	.047	.023	.047	.028	.014	.015	.009	.005	
10.0	.130	.072	.034	.112	.063	.030	.077	.044	.021	.045	.026	.013	.015	.009	.004	

C Range: 0 - 360DEG  
 C Interval: 22.5DEG  
 Test Speed: 10.0deg/s  
 Temperature:25.3DEG  
 Operators:ben  
 Test Date:2016-07-21

$\gamma$  Range: 0 - 180DEG  
 $\gamma$  Interval: 1.0DEG  
 Test System:EVERFINE GO-R5000\_V2 SYSTEM V2.0.351  
 Humidity:47%  
 Test Distance:2.437m [K=1.0000]  
 Remarks:

**UGR(Unified Glare Rating) Table**

Test:U:120.1V I:0.1210A P:14.41W PF:0.9920 Lamp Flux:1065.2x1 lm										
NAME: CL70-LED					TYPE:N/A			WEIGHT:N/A		
SPEC.:N/A					DIM.: N/A			SERIAL No.:N/A		
MFR.: NDR					SUR.:N/A			Shielding Angle:N/A		
ceiling/cavity	0.7	0.7	0.5	0.5	0.3	0.7	0.7	0.5	0.5	0.3
walls	0.5	0.3	0.5	0.3	0.3	0.5	0.3	0.5	0.3	0.3
working plane	0.2	0.2	0.2	0.2	0.2	0.2	0.2	0.2	0.2	0.2
Room dimensions	Viewed crosswise					Viewed endwise				
x = 2H y = 2H	16.9	18.4	17.2	18.7	18.9	16.7	18.3	17.0	18.5	18.7
3H	18.6	20.0	18.9	20.3	20.5	18.3	19.7	18.7	20.0	20.3
4H	19.3	20.7	19.7	20.9	21.2	19.0	20.4	19.4	20.6	20.9
6H	20.0	21.2	20.3	21.5	21.8	19.6	20.9	20.0	21.2	21.5
8H	20.3	21.5	20.6	21.8	22.1	19.9	21.1	20.2	21.4	21.7
12H	20.5	21.7	20.9	22.0	22.4	20.1	21.3	20.5	21.6	22.0
4H 2H	17.5	18.9	17.9	19.2	19.4	17.4	18.7	17.7	19.0	19.3
3H	19.4	20.6	19.8	20.9	21.2	19.2	20.4	19.6	20.7	21.0
4H	20.3	21.4	20.7	21.7	22.1	20.0	21.1	20.4	21.5	21.8
6H	21.1	22.0	21.5	22.4	22.8	20.8	21.7	21.2	22.1	22.5
8H	21.5	22.4	21.9	22.7	23.2	21.1	22.0	21.5	22.4	22.8
12H	21.8	22.7	22.3	23.1	23.5	21.4	22.3	21.9	22.7	23.1
8H 4H	20.6	21.5	21.0	21.9	22.3	20.4	21.3	20.8	21.7	22.1
6H	21.6	22.4	22.1	22.8	23.2	21.3	22.1	21.8	22.5	23.0
8H	22.1	22.8	22.6	23.2	23.7	21.8	22.5	22.3	22.9	23.4
12H	22.6	23.2	23.2	23.7	24.2	22.3	22.8	22.8	23.3	23.8
12H 4H	20.6	21.5	21.1	21.9	22.3	20.4	21.2	20.9	21.7	22.1
6H	21.7	22.4	22.2	22.8	23.3	21.4	22.1	21.9	22.6	23.1
8H	22.3	22.9	22.8	23.3	23.8	22.0	22.6	22.5	23.0	23.5
Variations with the observer position at spacings:										
S = 1.0H	+ 0.1 / - 0.2					+ 0.1 / - 0.2				
1.5H	+ 0.2 / - 0.3					+ 0.2 / - 0.3				
2.0H	+ 0.1 / - 0.3					+ 0.1 / - 0.3				

CIE Pub.117 Corrected 1065 lm Total Lamp Luminous Flux.(8log(F/F0) = 0.2)

 C Range: 0 - 360DEG  
 C Interval: 22.5DEG  
 Test Speed: 10.0deg/s  
 Temperature:25.3DEG  
 Operators:ben  
 Test Date:2016-07-21

 $\gamma$  Range: 0 - 180DEG  
 $\gamma$  Interval: 1.0DEG  
 Test System:EVERFINE GO-R5000\_V2 SYSTEM V2.0.351  
 Humidity:47%  
 Test Distance:2.437m [K=1.0000]  
 Remarks:

**UTILIZATION FACTORS TABLE**

Test:U:120.1V I:0.1210A P:14.41W PF:0.9920 Lamp Flux:1065.2x1 lm		
NAME: CL70-LED	TYPE:N/A	WEIGHT:N/A
SPEC.:N/A	DIM.: N/A	SERIAL No.:N/A
MFR.: NDR	SUR.:N/A	Shielding Angle:N/A

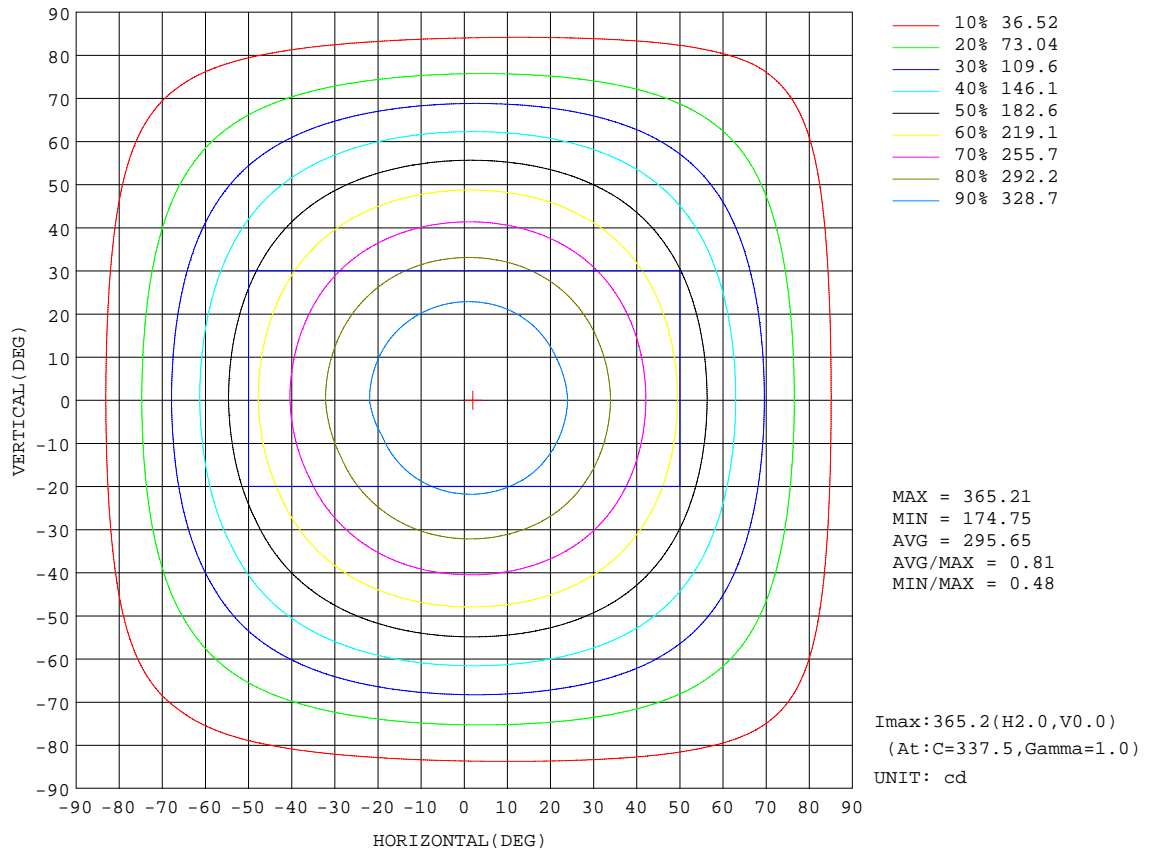
REFLECTANCE										
Ceiling	0.8	0.8	0.8	0.7	0.7	0.7	0.5	0.5	0.5	0
Walls	0.7	0.5	0.3	0.7	0.5	0.3	0.7	0.5	0.3	0
Working plane	0.2	0.2	0.2	0.2	0.2	0.2	0.2	0.2	0.2	0
ROOM INDEX	UTILIZATION FACTORS(PERCENT) $k(RI) \times RCR = 5$									
k = 0.60	57	45	38	56	45	38	55	44	37	31
0.80	66	55	47	65	54	47	63	53	47	39
1.00	75	63	56	73	63	56	71	64	55	48
1.25	82	71	63	80	70	63	77	69	62	55
1.50	87	76	69	85	75	69	82	74	67	60
2.00	93	85	78	92	83	77	88	81	75	67
2.50	97	89	83	95	88	82	91	85	80	71
3.00	101	94	88	99	92	87	94	89	84	75
4.00	105	99	94	102	97	92	98	93	90	80
5.00	107	102	98	105	100	96	100	96	93	83
ROOM INDEX	UF(total)									Direct
According to DIN EN 13032-2 2004			Suspended				SHRNOM = 1.25			

C Range: 0 - 360DEG  
 C Interval: 22.5DEG  
 Test Speed: 10.0deg/s  
 Temperature:25.3DEG  
 Operators:ben  
 Test Date:2016-07-21

$\gamma$  Range: 0 - 180DEG  
 $\gamma$  Interval: 1.0DEG  
 Test System:EVERFINE GO-R5000\_V2 SYSTEM V2.0.351  
 Humidity:47%  
 Test Distance:2.437m [K=1.0000]  
 Remarks:

**ISOCANDELA DIAGRAM**

Test:U:120.1V I:0.1210A P:14.41W PF:0.9920 Lamp Flux:1065.2x1 lm		
NAME: CL70-LED	TYPE:N/A	WEIGHT:N/A
SPEC.:N/A	DIM.: N/A	SERIAL No.:N/A
MFR.: NDR	SUR.:N/A	Shielding Angle:N/A



C Range: 0 - 360DEG  
 C Interval: 22.5DEG  
 Test Speed: 10.0deg/s  
 Temperature: 25.3DEG  
 Operators: ben  
 Test Date: 2016-07-21

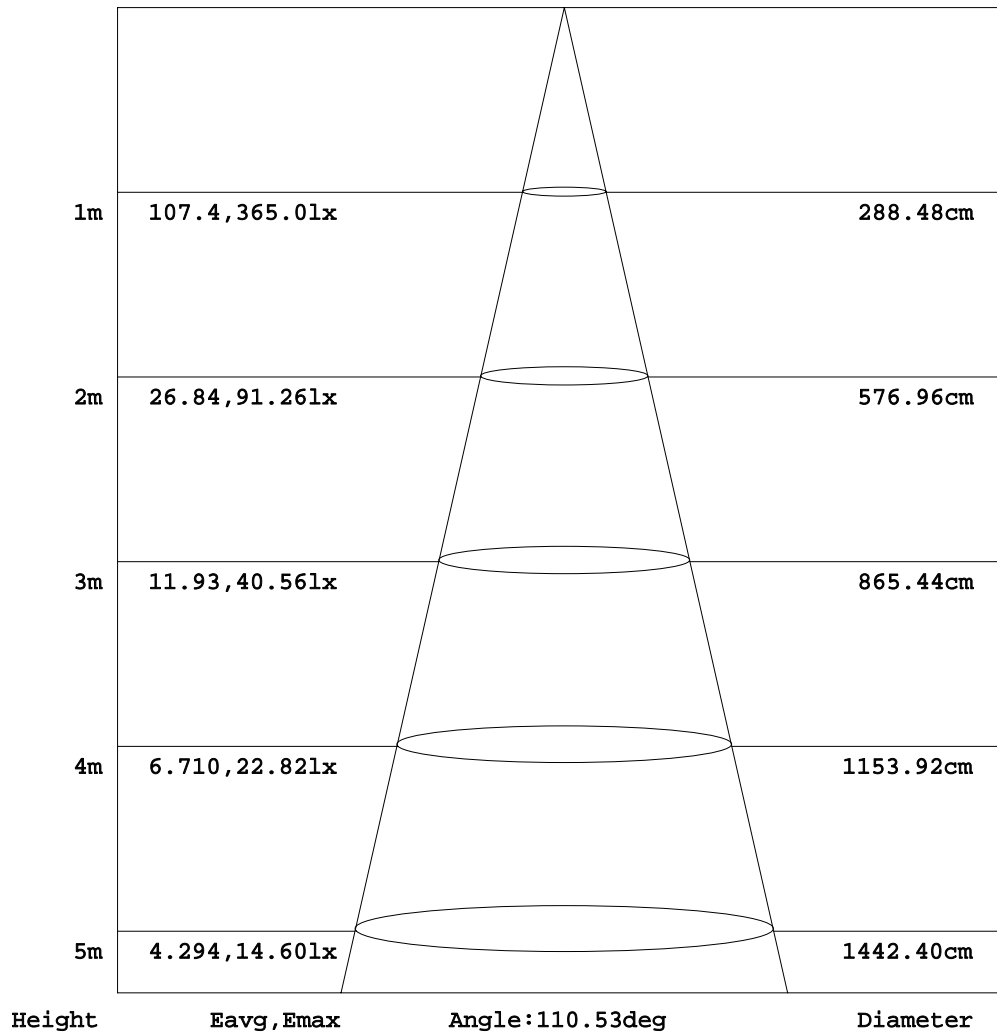
γ Range: 0 - 180DEG  
 γ Interval: 1.0DEG  
 Test System: EVERFINE GO-R5000\_V2 SYSTEM V2.0.351  
 Humidity: 47%  
 Test Distance: 2.437m [K=1.0000]  
 Remarks:



**AAI Figure**

Test:U:120.1V I:0.1210A P:14.41W PF:0.9920 Lamp Flux:1065.2x1 lm		
NAME: CL70-LED	TYPE:N/A	WEIGHT:N/A
SPEC.:N/A	DIM.: N/A	SERIAL No.:N/A
MFR.: NDR	SUR.:N/A	Shielding Angle:N/A

Flux out:741.3 lm



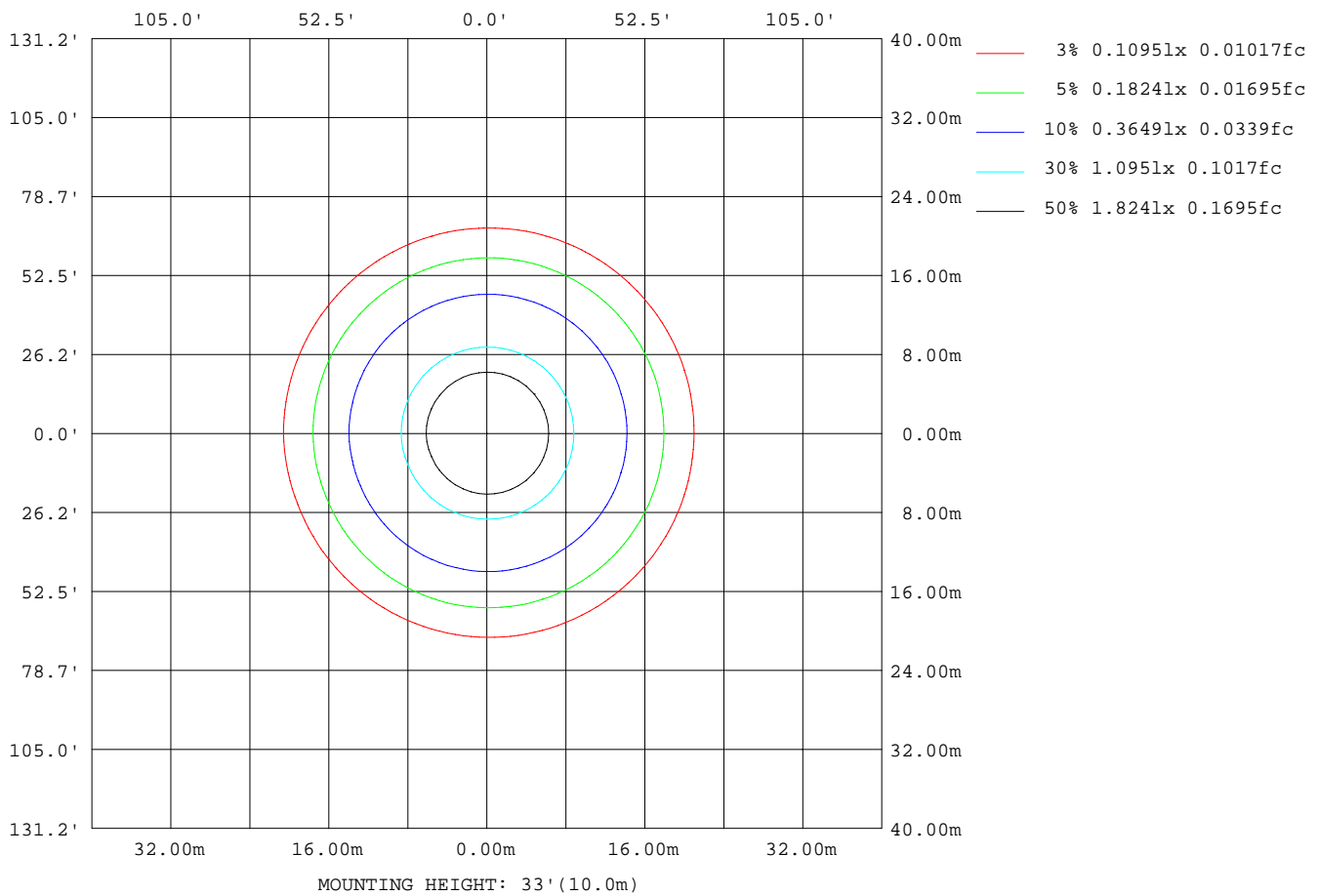
Note:The Curves indicate the illuminated area and the average illumination when the luminaire is at different distance.

C Range: 0 - 360DEG  
 C Interval: 22.5DEG  
 Test Speed: 10.0deg/s  
 Temperature:25.3DEG  
 Operators:ben  
 Test Date:2016-07-21

$\gamma$  Range: 0 - 180DEG  
 $\gamma$  Interval: 1.0DEG  
 Test System:EVERFINE GO-R5000\_V2 SYSTEM V2.0.351  
 Humidity:47%  
 Test Distance:2.437m [K=1.0000]  
 Remarks:

**ISOLUX DIAGRAM**

Test:U:120.1V I:0.1210A P:14.41W PF:0.9920 Lamp Flux:1065.2x1 lm		
NAME: CL70-LED	TYPE:N/A	WEIGHT:N/A
SPEC.:N/A	DIM.: N/A	SERIAL No.:N/A
MFR.: NDR	SUR.:N/A	Shielding Angle:N/A



C Range: 0 - 360DEG  
 C Interval: 22.5DEG  
 Test Speed: 10.0deg/s  
 Temperature:25.3DEG  
 Operators:ben  
 Test Date:2016-07-21

γ Range: 0 - 180DEG  
 γ Interval: 1.0DEG  
 Test System:EVERFINE GO-R5000\_V2 SYSTEM V2.0.351  
 Humidity:47%  
 Test Distance:2.437m [K=1.0000]  
 Remarks:

**LED Avg.L Report**

Test:U:120.1V I:0.1210A P:14.41W PF:0.9920 Lamp Flux:1065.2x1 lm		
NAME: CL70-LED	TYPE:N/A	WEIGHT:N/A
SPEC.:N/A	DIM.: N/A	SERIAL No.:N/A
MFR.: NDR	SUR.:N/A	Shielding Angle:N/A

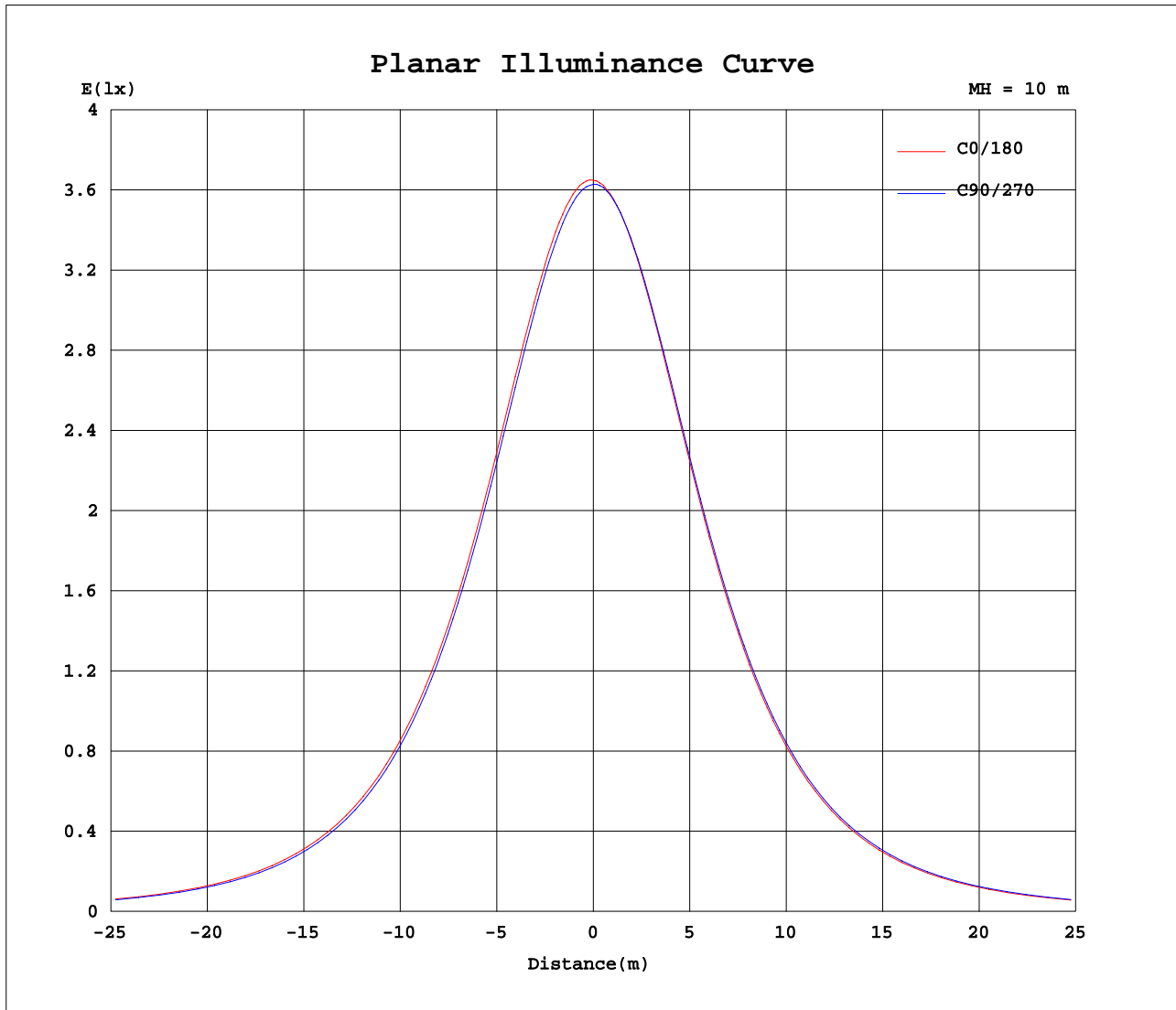
AvgL	cd/m2
L_0~180(65)av	3067
L_0~180(75)av	2934
L_0~180(85)av	3814
L_90~270(65)av	3062
L_90~270(75)av	2919
L_90~270(85)av	3735
L_45(65)av	3063
L_45(75)av	2927
L_45(85)av	3771

Standard: GB/T 29293-2012

 C Range: 0 - 360DEG  
 C Interval: 22.5DEG  
 Test Speed: 10.0deg/s  
 Temperature:25.3DEG  
 Operators:ben  
 Test Date:2016-07-21

 γ Range: 0 - 180DEG  
 γ Interval: 1.0DEG  
 Test System:EVERFINE GO-R5000\_V2 SYSTEM V2.0.351  
 Humidity:47%  
 Test Distance:2.437m [K=1.0000]  
 Remarks:

## Planar Illuminance Curve



C Range: 0 - 360DEG  
 C Interval: 22.5DEG  
 Test Speed: 10.0deg/s  
 Temperature: 25.3DEG  
 Operators: ben  
 Test Date: 2016-07-21

$\gamma$  Range: 0 - 180DEG  
 $\gamma$  Interval: 1.0DEG  
 Test System: EVERFINE GO-R5000\_V2 SYSTEM V2.0.351  
 Humidity: 47%  
 Test Distance: 2.437m [K=1.0000]  
 Remarks:

**LUMINOUS DISTRIBUTION INTENSITY DATA**

Test:U:120.1V I:0.1210A P:14.41W PF:0.9920 Lamp Flux:1065.2x1 lm		
NAME: CL70-LED	TYPE:N/A	WEIGHT:N/A
SPEC.:N/A	DIM.: N/A	SERIAL No.:N/A
MFR.: NDR	SUR.:N/A	Shielding Angle:N/A

Table--1

UNIT: cd

C(DEG) γ (DEG)	0	22.5	45	67.5	90	112.5	135	157.5	180	202.5	225	247.5	270	292.5	315	337.5			
0	363	363	363	363	363	363	363	363	363	363	363	363	363	363	363	363			
5	363	362	362	361	361	361	360	360	361	360	361	361	362	363	363	363			
10	358	358	357	356	355	355	354	354	355	355	356	356	357	358	359	359			
15	350	350	349	347	346	346	345	344	345	346	347	348	349	350	351	351			
20	339	338	337	335	334	333	332	332	333	334	335	336	337	338	339	340			
25	324	323	322	320	319	318	316	316	318	318	319	321	322	324	325	325			
30	306	306	304	303	301	299	299	298	300	300	301	303	305	306	307	308			
35	286	285	284	282	281	279	278	277	279	280	281	283	285	286	287	288			
40	264	264	262	260	258	257	255	255	257	257	258	260	262	264	265	266			
45	241	240	238	236	234	232	231	230	232	233	234	236	238	240	241	242			
50	215	214	213	211	209	207	205	205	206	207	209	211	213	215	216	217			
55	189	188	186	184	182	180	178	178	180	181	182	184	186	188	190	191			
60	162	161	159	157	155	153	151	151	153	153	155	157	159	161	162	163			
65	134	133	132	130	128	126	124	123	125	126	127	129	131	133	135	136			
70	107	106	104	102	100	98.6	97.1	96.4	97.5	97.9	99.2	101	103	105	107	108			
75	80.3	79.7	78.1	76.3	74.4	72.7	71.4	70.5	71.5	71.8	73.0	74.6	76.7	78.7	80.5	81.7			
80	56.3	55.7	54.4	52.7	51.7	49.7	48.5	47.5	48.4	48.5	49.3	50.7	52.6	54.6	56.3	57.4			
85	36.6	36.0	34.8	33.4	32.0	30.7	29.7	29.1	29.9	29.9	30.4	31.5	33.1	34.8	36.5	37.7			
90	22.1	21.4	20.3	18.9	17.5	16.3	15.4	15.1	15.7	15.8	16.3	17.4	18.7	20.3	21.7	22.8			
95	11.4	10.9	9.90	8.69	7.53	6.57	5.95	5.63	6.09	6.26	6.72	7.51	8.62	9.85	11.3	12.3			
100	2.54	2.39	1.55	1.35	1.36	1.26	1.04	0.83	0.99	0.58	0.36	0.31	0.47	0.87	1.61	2.34			
105	0.28	0.29	0.30	0.31	0.33	0.33	0.34	0.36	0.28	0.28	0.20	0.23	0.24	0.13	0.18	0.23			
110	0.36	0.42	0.42	0.41	0.45	0.46	0.50	0.53	0.43	0.47	0.32	0.31	0.35	0.20	0.31	0.38			
115	0.53	0.56	0.59	0.63	0.61	0.62	0.65	0.77	0.64	0.66	0.54	0.50	0.51	0.22	0.47	0.61			
120	0.79	0.77	0.77	0.84	0.85	0.81	0.83	1.20	0.86	0.87	0.89	0.73	0.87	0.31	0.60	0.90			
125	1.06	1.09	0.97	1.10	1.05	1.13	1.03	1.43	1.04	1.23	1.13	1.00	0.87	0.61	0.85	1.19			
130	1.53	1.42	1.25	1.43	1.43	1.41	1.38	1.71	1.23	1.67	1.27	1.26	1.21	0.69	1.11	1.48			
135	1.84	1.73	1.53	1.79	1.75	1.67	1.75	2.03	1.54	1.57	1.45	1.59	1.44	0.99	1.13	1.88			
140	2.01	1.94	1.85	2.01	2.01	2.02	2.15	2.35	1.84	1.80	2.03	1.48	1.56	1.16	1.60	2.20			
145	2.18	2.10	2.05	2.19	2.42	2.27	2.39	2.59	1.97	2.07	2.26	1.65	2.03	1.27	1.73	2.25			
150	2.68	2.23	2.31	2.31	2.51	2.74	2.68	2.64	2.60	2.09	2.24	1.99	2.17	1.72	1.29	1.67			
155	2.38	2.39	2.44	2.97	2.59	2.58	3.04	2.90	2.40	1.98	2.37	2.38	1.92	1.82	1.68	1.93			
160	2.61	2.71	2.60	2.18	2.73	2.77	2.79	3.17	2.76	2.05	2.80	2.91	2.13	2.26	1.79	2.16			
165	2.38	2.66	2.58	1.92	2.93	2.72	3.07	3.04	2.32	1.72	2.45	2.91	2.56	2.32	1.26	1.91			
170	2.88	2.61	2.16	1.73	2.25	2.72	2.73	2.28	2.45	2.10	2.04	2.50	2.03	2.15	0.94	0.99			
175	1.67	1.64	1.56	1.67	2.14	1.87	1.75	1.74	1.97	1.95	1.46	2.27	1.73	1.58	1.97	1.52			
180	0.39	0.41	0.41	0.38	0.31	0.22	0.29	0.32	0.42	0.42	0.42	0.42	0.42	0.42	0.42	0.42			

 C Range: 0 - 360DEG  
 C Interval: 22.5DEG  
 Test Speed: 10.0deg/s  
 Temperature:25.3DEG  
 Operators:ben  
 Test Date:2016-07-21

 γ Range: 0 - 180DEG  
 γ Interval: 1.0DEG  
 Test System:EVERFINE GO-R5000\_V2 SYSTEM V2.0.351  
 Humidity:47%  
 Test Distance:2.437m [K=1.0000]  
 Remarks: