

# PINNACLE Neonflex RGBW LED Tape Light

TL150

## CUTTING AND INSTALLING NEONFLEX TOP VIEW CONNECTORS

### IMPORTANT

Read all instructions in order to ensure safety and proper installation.

### GENERAL INFORMATION

**\*Ensure all connections are tightly sealed.**

**Note:** Some connections need to be sealed using waterproof silicone sealant/caulking, which is not provided. Must be purchased from local hardware store.

Wet location tape light model TL150 must be installed using the specified mounting clips. Ensure to not damage the silicone protective coating during installation.

Must be installed with 24V DC power supply ONLY (sold separately). Recommended to use with the Pinnacle Series driver series (TLD24V-30W, TLD24V-60W, TLD24V-96W, TLD24V-192W or TLD24V-288W).

Read and follow instructions to avoid electric shock and achieve a proper installation.

Save these instructions for future reference.

It is recommended to consult your electrician for all high voltage wiring to the LED Class 2 drivers and connecting all 24V low voltage LED tape light.

Installation surface must be cleaned and dry prior to the tape light being applied.

### MAINTENANCE & CARE

1. Ensure that the power is disconnected prior to servicing.
2. To keep the finish of this product, wipe with soft cloth periodically.
3. Do not use harsh chemical solvents as it may discolour or damage the finish or lens.

### BEFORE INSTALLATION

1. Read these instructions carefully before attempting to install this product.
2. Disconnect electrical power before installing or servicing any part of this fixture.

## INSTALLATION GUIDE

### WARNING

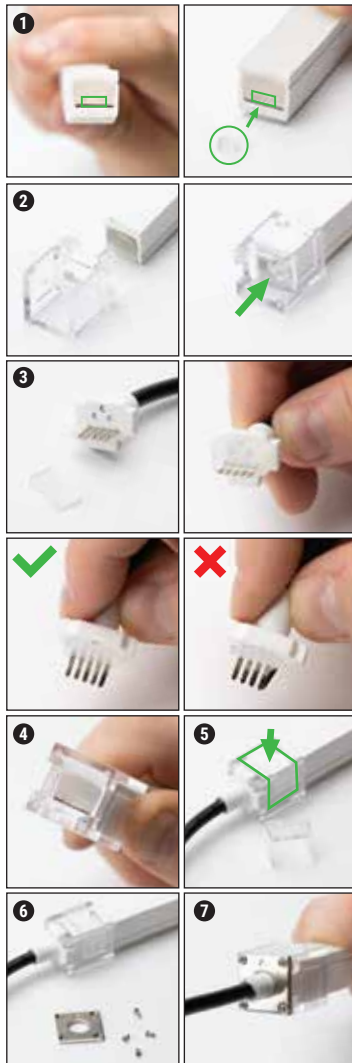
Risk of electric shock. Turn OFF power before installation or removal.

## CUTTING AND INSTALLING NEONFLEX TOP VIEW CONNECTORS



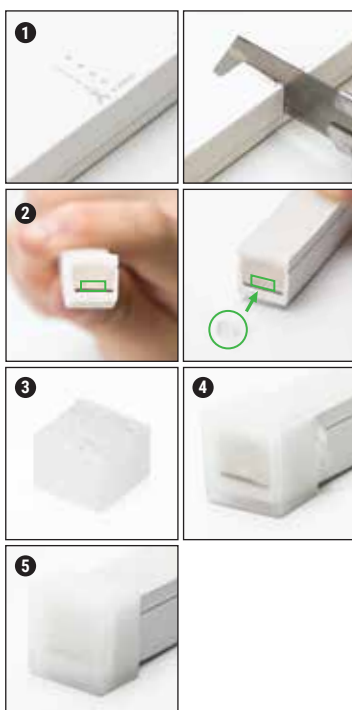
### CUTTING THE TL150 TAPE LIGHT

1. Ensure to never power the TL150 Neonflex tape light while it is still on the reel. Powering the tape light with it still on the reel can cause the tape to overheat and damage the product.
2. Remove the tape light reel from the packaging and inspect the product to ensure there is no damage or defects.
3. Measure the tape light to the desired length and cut the tape light at the nearest cut point. Using a sharp utility knife, gently cut straight down through the body of the TL150 tape light. Ensure to cut directly on the marked cutting point on the bottom of the tape light.  
\*Do not use scissors or wire snips to cut the TL150 tape.
4. All cuts must be terminated using the TL150 end caps, tape to wire lead or joiner cable connectors



## CONNECTING THE TL150 WIRE LEADS OR JOINER CABLES

- 1 Insert the rubber plug into the empty space above the FPC board to seal the opening. The side of the rubber plug with the round hole faces the cut end of the tape light.
- 2 Slide the slotted clear cube onto the end of the neon tape light with the notched portion on the back of the tape light.
- 3 Slide the silicone gasket onto the cable pins and make sure to place the gasket in the correct orientation. At this step, ensure the plug pins are not overlapping and pointed straight.
- 4 Insert the cable pins into the TL150 tape light. **IMPORTANT:** the cable pins must be inserted between the back of the FPC and the silicone backing board. To achieve this, flex the neon tape coating using your thumb as shown in the image below, and slide the cable pins behind the FPC. Do not insert the pins on the top side of the LED board as this can damage the FPC. Be careful to not damage the cable pins when inserted the connector. Ensure the cables remain straight.
- 5 Insert the clear tension clip to the clear cube on the back of the TL150 tape connector. Make sure to line up notch to notch.
- 6 Slide the metal plate through the cable ensuring the countersunk holes point away from the tape light. The side with the triangle aligns with the front side of the LED tape light.  
**Note:** prior to securing the connector, perform a quick light up test to ensure all connections and the polarity are correct.
- 7 Secure the metal plate using the 4 screws provided. Ensure a tight seal on all screw points.



## CONNECTING THE TL150 END CAP CONNECTORS

- 1 Cut the TL150 tape light using only a sharp utility knife on a flat surface to ensure an even and straight cut.
- 2 Insert the rubber plug into the empty space above the FPC board. Another option is to apply a small amount of silicone adhesive to fill the opening. Be careful not to apply too much silicone as this could prevent the light from shining through on the end.
- 3 Apply silicone adhesive to the end cap connector. You do not need to fill the end cap entirely, just apply enough silicone so that it will seal on the end of the TL150 tape.
- 4 Push the end cap onto the cut end of the tape light. The glue will ooze out the edges of the end cap. Ensure all edges of the tape are sealed with silicone adhesive.
- 5 Using a cloth, wipe off any excess silicone adhesive.

# DRIVER

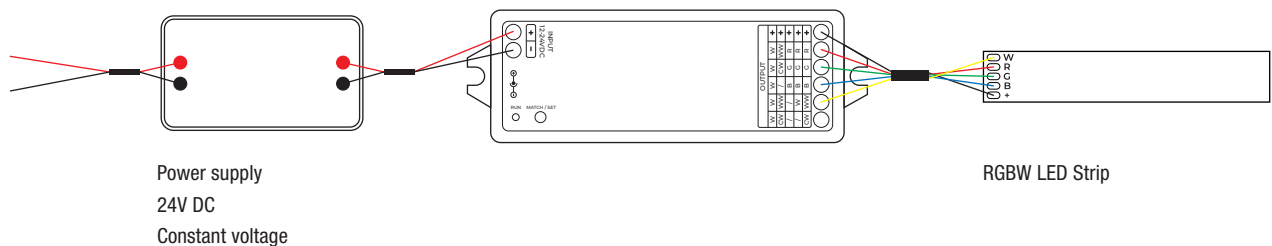
24V tape light must always be used in conjunction with a Class 2 rated LED driver. Never connect the tape light directly to high voltage power. Bypassing the driver will damage and burn out the LEDs.

For full range dimmability, we recommend using the NDR LED Class 2 drivers (TLD24V-30W, TLD24V-60W, TLD24V-96W, TLD24V-192W or TLD24V-288W).

Ensure to refer to the 24V Tape Light LED Driver dimmer compatibility page on ndrlighting.com to find the LED dimmer best suited for your installation.

The NDR LED drivers are rated for 120-277V input/ 24V output. Ensure that you connect the wires from the power source to the input side of the driver and the wires from the tape light to the output side of the driver.

When installing in a wet location, ensure to use proper wet location rated knockout connectors. Failure to use proper connectors can cause damage to wiring compartment and/or to the LEDs on the tape light.



## Limited Warranty

The warranty applies to the product from the original date of purchase for five (5) years against manufacturing defects. The owner must provide a copy of the original proof of purchase. The manufacturer's obligation under this warranty is limited to repairing or replacing the component. It is not related in any way to the cost of the connection, the installation of the replacement parts or cost of transport. For all claims, please contact our customer service department at 1-855-739-8228 or e-mail us at sales@ndrlighting.com

## Important Safety Information

Before installing your light fixture, thoroughly review enclosed installation manual. Check all connections to be sure they are tight and correct. This fixture is not serviceable. Any attempt to disassemble this fixture may cause damage to the product and will void warranty. This product must be installed in accordance with the applicable installation code by a person familiar with the construction and operation of the product and the hazards involved. If you are unsure about the wiring, installation, or maintenance of this fixture, consult a qualified electrician or local electrical inspector, and check your local electrical code.

**WARNING:** Risk of electrical shock. Turn off the main power at fuse or circuit breaker before wiring the fixture to the power supply.

**CAUTION:** Risk of injury. Some parts of this fixture may have sharp edges. To prevent cuts and scrapes, wear gloves when handling the parts. Account for small parts and destroy packing material, as these may be hazardous to children.

**CAUTION:** Risk of fire. Use only on 120 - 277 volt 60Hz circuits. The tape light products are compatible for use with LED dimmers.