

PINNACLE

Professional Grade 24V
Long Run COB Tape Light

TL210

CUTTING AND INSTALLING 24V COB TAPE LIGHT FAST CONNECTORS

IMPORTANT

Read all instructions in order to ensure safety and proper installation.

GENERAL INFORMATION

- Read and follow all safety instructions to avoid electric shock and proper installation.
- Save these instructions for future reference.
- It is recommended to consult your electrician for all high voltage wiring to the LED Class 2 drivers and connecting all 24V low voltage LED tape light.
- All TL210 24V Pinnacle Series Tape Light products come equipped with 3M Self-Adhesive double-sided tape. It is designed to be installed on NON-POROUS surfaces only.
- Installation surface must be cleaned and dry prior to the tape light being applied.
- For porous surfaces, it is recommended to seal the porous surface to ensure the 3M self-adhesive tape will have a strong adhesion to the surface.
- Another method for porous surfaces is to use an aluminum foil tape before installing the tape light.

MAINTENANCE & CARE

1. Ensure that the power is disconnected prior to servicing.
2. To keep the finish of this product, wipe with soft cloth periodically.
3. Do not use harsh chemical solvents as it may discolour or damage the finish or lens.

BEFORE INSTALLATION

1. Read these instructions carefully before attempting to install this product.
2. Disconnect electrical power before installing or servicing any part of this fixture.

Prior to cutting and installing, ensure you have the correct accessories for your Tape Light model. Consult the Specification Sheets and/or Pinnacle Series Accessories Matrix Sheet available on the NDR Lighting website.

INSTALLATION GUIDE

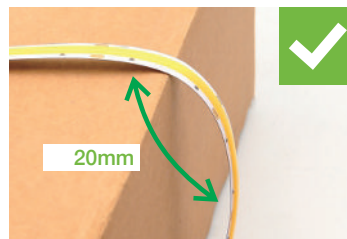
⚠ WARNING

Risk of electric shock. Turn OFF power before installation or removal.

INSTALLING 24V COB TAPE LIGHT FAST CONNECTORS



Always keep the tape rolled on the reel to avoid twisting of the tape and avoid damaging the LEDs.



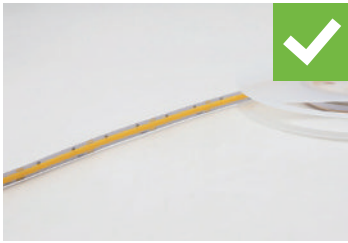
It is possible to go around outside corners with the 24V tape, however it is recommended to keep a curvature greater than 0.8" (20mm) in diameter. Bending the tape tight on the corner can damage the LEDs or the circuitry board.

INSTALLATION GUIDE (CONTINUED)

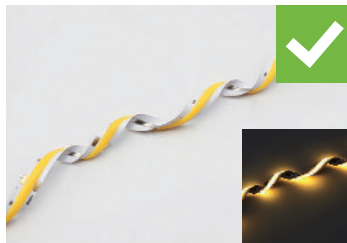
WARNING

Risk of electric shock. Turn OFF power before installation or removal.

INSTALLING 24V COB TAPE LIGHT FAST CONNECTORS

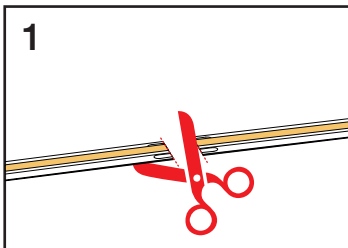


During installation of the 24V tape light, the best practice for handling is to keep the tape as straight as possible.

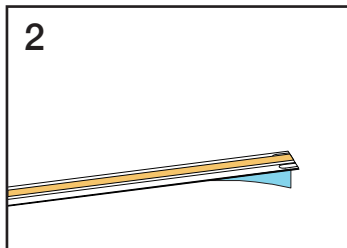


The COB tape has a much stronger backing that allows for the tape to be twisted on a much tighter radius than the other 24V models. Ensure to always maintain a torsion radius greater than 0.8" (20mm).

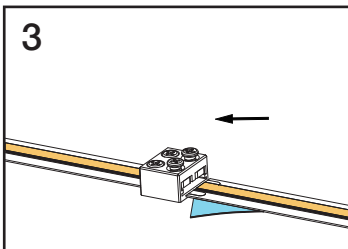
CUTTING AND CONNECTING 24V COB TAPE LIGHT



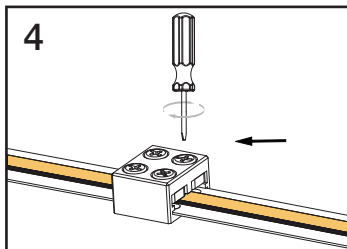
1 Always cut the tape light on the specified copper pad cutting points.



2 Peel away the 3M Self-Adhesive backing from the area on the tape that will be inside the connector.



3 Ensure the +/- polarity on the tapes you are connecting are in sequence.



4 For tape to wire connectors, ensure you always connect the (+) side of the tape to the red wire and the (-) side of the tape to the black wire.

DRIVER

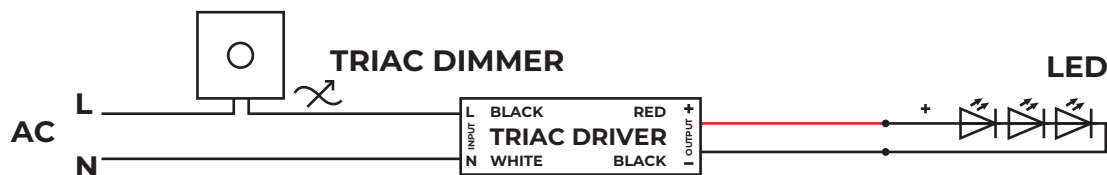
24V tape light must always be used in conjunction with a Class 2 rated LED driver. Never connect the tape light directly to high voltage power. Bypassing the driver will damage and burn out the LEDs.

For smooth and full range dimmability, we recommend using the NDR Pinnacle Series Class 2 LED drivers.

Ensure to refer to the 24V Tape Light LED Driver dimmer compatibility page on ndrlighting.com to find the LED dimmer best suited for your installation.

The NDR LED drivers are rated for 120-277V input/ 24V output. Ensure that you connect the wires from the power source to the input side of the driver and the wires from the tape light to the output side of the driver.

When installing in a wet location, ensure to use proper wet location rated knockout connectors. Failure to use proper connectors can cause damage to wiring compartment and/or to the LEDs on the tape light.



Limited Warranty

The warranty applies to the product from the original date of purchase for five (5) years against manufacturing defects. The owner must provide a copy of the original proof of purchase. The manufacturer's obligation under this warranty is limited to repairing or replacing the component. It is not related in any way to the cost of the connection, the installation of the replacement parts or cost of transport. For all claims, please contact our customer service department at 1-855-739-8228 or e-mail us at sales@ndrlighting.com

Important Safety Information

Before installing your light fixture, thoroughly review enclosed installation manual. Check all connections to be sure they are tight and correct. This fixture is not serviceable. Any attempt to disassemble this fixture may cause damage to the product and will void warranty. This product must be installed in accordance with the applicable installation code by a person familiar with the construction and operation of the product and the hazards involved. If you are unsure about the wiring, installation, or maintenance of this fixture, consult a qualified electrician or local electrical inspector, and check your local electrical code.

WARNING: Risk of electrical shock. Turn off the main power at fuse or circuit breaker before wiring the fixture to the power supply.

CAUTION: Risk of injury. Some parts of this fixture may have sharp edges. To prevent cuts and scrapes, wear gloves when handling the parts. Account for small parts and destroy packing material, as these may be hazardous to children.

CAUTION: Risk of fire. Use only on 120 - 277 volt 60Hz circuits. The tape light products are compatible for use with LED dimmers.