



LUCIA SERIES

PREMIUM DIMMABLE

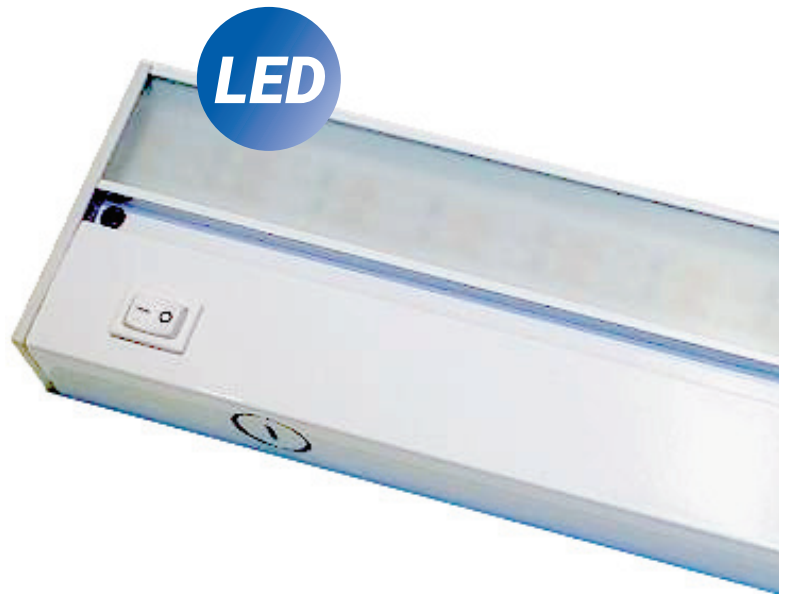
The next generation in our Lucia under cabinet series: the **Lucia LED Premium**.

The Lucia Premium brings dimming capabilities and a higher lumen output to NDR Electric's popular Lucia series.

Product features:

- ▶ Hardwire application only
- ▶ Dimmable
- ▶ Quality aluminum construction
- ▶ Multiple knockout locations for easy and quick installation
- ▶ Diffused frosted glass for even light distribution

Each unit includes a conveniently located ON-OFF switch and integrated driver. Ideal for under cabinets, closets and work stations.



MODEL NO.	SIZE	POWER	LIGHT OUTPUT (LUMENS)
UNL50DIM-L35-8WH	8"	3W	350 lm
UNL50DIM-L35-12WH	12"	5W	590 lm
UNL50DIM-L35-21WH	21"	8W	940 lm
UNL50DIM-L35-30WH	30"	12W	1400 lm
UNL50DIM-L35-40WH	40"	16W	1880 lm

Color temperature

3500K

Available finishes

White

LIFETIME
40,000
HOURS

LIMITED WARRANTY
3
YEARS



40,000 hour lifetime, 3 year limited warranty
Hard wire application only



NDR Electric
166 boulevard Brunswick
Montréal (Québec) H9R 5P9

ndrelectric.com

Tel: 514 695-8228 1 855 739-8228
Fax: 514 695-9009 1 855 812-9009